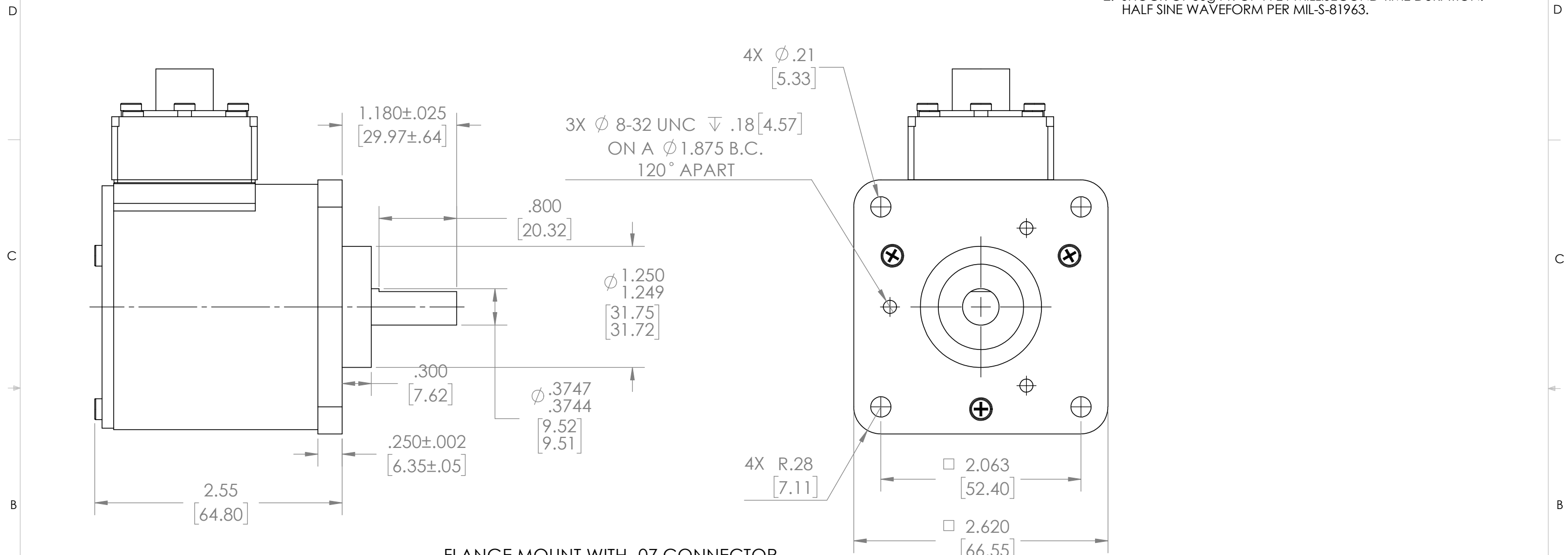


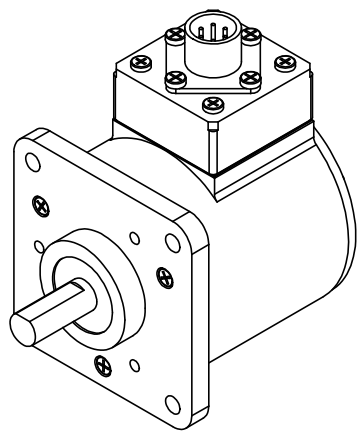
NOTES:

- VIBRATION OF .06" DOUBLE AMPLITUDE OR 15g PK AT 10 TO 2000 Hz PER MIL-S-81963.
- SHOCK OF 50g PK OF 11 ± 1 MILLISECOND TIME DURATION. HALF SINE WAVEFORM PER MIL-S-81963.



FLANGE MOUNT WITH -07 CONNECTOR AND SHAFT SEAL SHOWN SEE SHEET TWO AND THREE FOR OTHER OPTIONS

MECHANICAL DATA		
TEMPERATURE RANGE	°C	-55 TO +125
WEIGHT	NOM. LB	1.6
RADIAL PLAY MAX	@ 1 LBF LOAD	0.0015
END PLAY MAX	@ 5 LBF LOAD	0.005
SHAFT LOAD, RADIAL @ SHAFT END	LBF MAX	40
SHAFT LOAD, AXIAL @ SHAFT END	LBF MAX	20
CONTINUOUS SPEED	MAX KRPM	20



PART, ASSEMBLY AND ALL COMPONENTS MEET EU ROHS DIRECTIVE

THIRD ANGLE PROJECTION

THE INFORMATION CONTAINED IN THIS DRAWING IS THE SOLE PROPERTY OF API DELEVAN. ANY REPRODUCTION IN PART OR WHOLE WITHOUT THE WRITTEN PERMISSION OF HAROWE IS PROHIBITED.

UNLESS OTHERWISE SPECIFIED: DIMENSIONS ARE IN INCHES [mm] DIAMETERS CONCENTRIC .003 [.076] TIR FACES PERPENDICULAR -.003 [.076] INSIDE CORNERS R .015 [.381] MAX INTERPRETATION PER ASME Y14.5M-1994

UNLESS OTHERWISE SPECIFIED: REMOVE ALL BURRS AND BREAK SHARP EDGES -.005/.010[.127/.254]

TOLERANCES: DECIMAL .00±.01[.254] .000 ±.005[.127] ANGLE ±0.5° CHAMFER ANGLE ±10°

MACHINE SURFACES 63√

APPROVALS	DATE
DRAWN	-
CHECKED	-
DES ENG	-

API Delevan

R25 OUTLINE

SIZE DWG. NO. B

SCALE SHEET 1 OF 3 C.CODE IDENT: 99800

REVISIONS					
REV	ECO	DESCRIPTION	DATE	BY	CHECKED
-	-	NEW DRAWING			

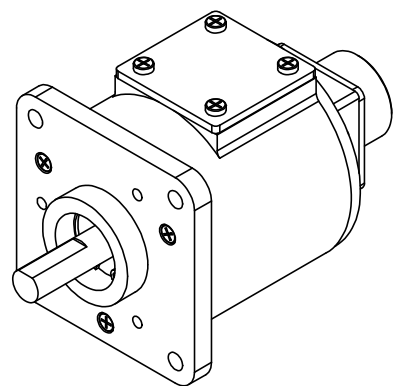
NUMBERING

R25-XXXXXX-XXXX

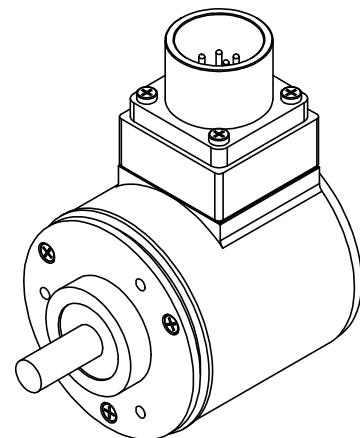
STYLE AND SIZE

MOUNT TYPE	STYLE	CONNECTOR NUMBER	CONNECTOR MODEL	CONNECTOR LOCATION	LOCATION	SHAFT FLAT	FLAT STYLE	SHAFT SEAL	LENGTH	INPUT EXCITATION NUMBER	VRMS	KHZ	TR	SPEED	ACCURACY NUMBER	± ARCMIN
F	FLANGE MOUNT	02	MS3102E-16S-1P	T	TOP	Y	WITH FLAT	Y	YES	01	5.3	4	.5	1	02	2 W/ 32 INPUT EXCITATION ONLY
		03	MS3102E-18-1P			N	NO FLAT									
S	SERVO MOUNT	06	FLYING LEADS	B	REAR	D	DOUBLE FLATS @ 90°	N	NO	02	4	5	.5	1	03	3 W/ 32 INPUT EXCITATION ONLY
		07	MS3112E-10-6P							03	4	7	.47	1		
P	SERVO MOUNT W/PILOT	08	RC-12P2N8A2200							04	4.25	2.5	.5	1	05	5 W/ 21, 31, OR 32 INPUT EXCITATION ONLY
		05	7							5	.95	1				
		06	2							5	1	1	07	7		
		08	8							2.6	1.07	1	10	10		
		09	26							2.4	.454	1	15	15		
		10	26							2.4	.454	1	20	20		
12	4	5	.5	1	20	20										
21	8	4	.25	2	2S	20 PK-PK										
31	4	7	.45	3												
32	7	5	.95	3												

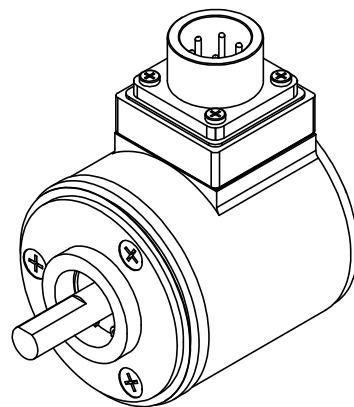
SEE PAGE 3 FOR OTHER OPTIONS



REAR CONNECTOR



SERVO MOUNT



SERVO MOUNT WITH PILOT

THIRD ANGLE PROJECTION

UNLESS OTHERWISE SPECIFIED:
 DIMENSIONS ARE IN INCHES [mm]
 DIAMETERS CONCENTRIC .003 [.076] TIR
 FACES PERPENDICULAR .003 [.076]
 INSIDE CORNERS R .015 [.381] MAX
 INTERPRETATION PER ASME
 Y14.5M-1994

UNLESS OTHERWISE SPECIFIED:
 REMOVE ALL BURRS AND BREAK
 SHARP EDGES -.005/.010

TOLERANCES:
 DECIMAL .00±.01 [.254], .000 ±.005 [.127]
 ANGLE ±0.5°
 CHAMFER ANGLE ±10°

MACHINE SURFACES $\sqrt{63}$

API Delevan

R25 OUTLINE

MATERIAL -

FINISH -

APPROVALS -

CHECKED -

DES ENG -

DATE -

DATE -

SIZE B

DWG. NO. -

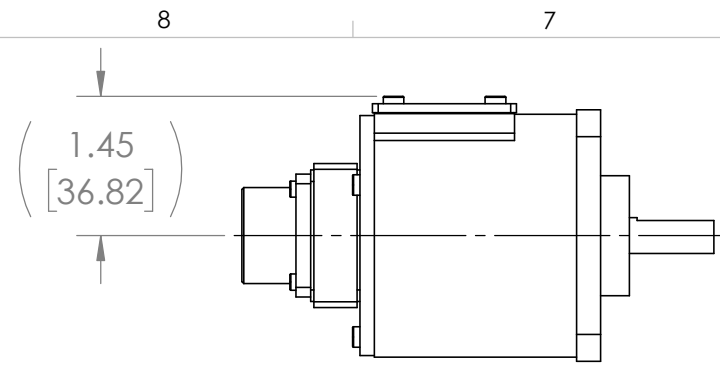
SCALE -

SHEET 2 OF 3

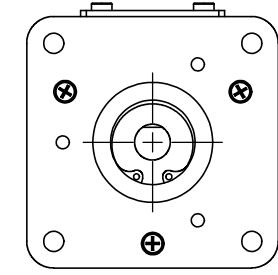
CODE IDENT: 58655

THE INFORMATION CONTAINED IN THIS DRAWING IS THE SOLE PROPERTY OF API DELEVAN. ANY REPRODUCTION IN PART OR WHOLE WITHOUT THE WRITTEN PERMISSION OF HAROWE IS PROHIBITED.

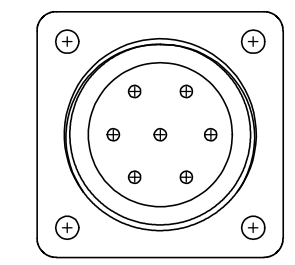
REVISIONS					
REV	ECO	DESCRIPTION	DATE	BY	CHECKED
-	-	NEW DRAWING			



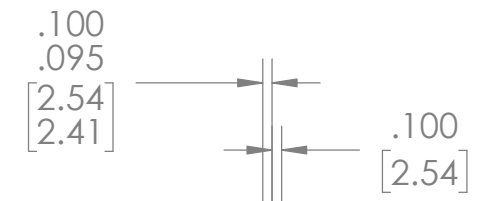
REAR CONNECTOR



CONNECTOR OPTIONS

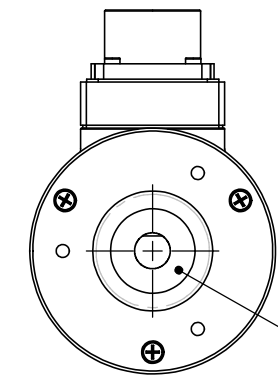


CONNECTOR -02

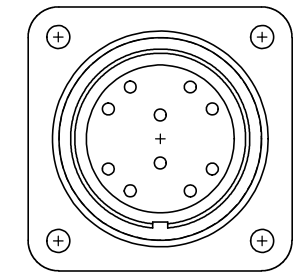


Ø 2.500
2.497
[63.50]
[63.42]

SERVO MOUNT

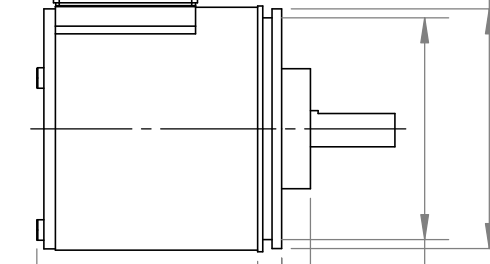


SHAFT SEAL



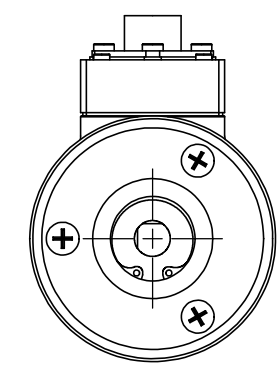
CONNECTOR -03

2.58
[65.53]

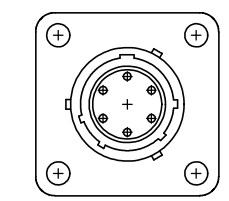


Ø 2.310
[58.67]

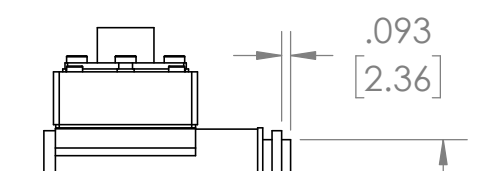
SERVO MOUNT WITH PILOT



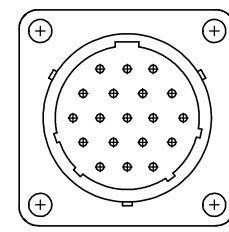
DOUBLE FLATS



CONNECTOR -07



Ø 2.310
2.308
[58.67]
[58.62]



CONNECTOR -14

THIRD ANGLE PROJECTION

THE INFORMATION CONTAINED IN THIS DRAWING IS THE SOLE PROPERTY OF API DELEVAN. ANY REPRODUCTION IN PART OR WHOLE WITHOUT THE WRITTEN PERMISSION OF HAROWE IS PROHIBITED.

UNLESS OTHERWISE SPECIFIED: DIMENSIONS ARE IN INCHES [mm] DIAMETERS CONCENTRIC .003 [.076] TIR FACES PERPENDICULAR .003 [.076] INSIDE CORNERS R .015 [.381] MAX		UNLESS OTHERWISE SPECIFIED: REMOVE ALL BURRS AND BREAK SHARP EDGES -.005/.010	
INTERPRETATION PER ASME Y14.5M-1994		TOLERANCES: DECIMAL .00±.01 [.254] .000 ±.005 [.127] ANGLE ±0.5° CHAMFER ANGLE ±10°	
MATERIAL	-	MACHINE SURFACES	63
FINISH	-	APPROVALS	DATE
		DRAWN	-
		CHECKED	-
		DES ENG	-

API Delevan

R25 OUTLINE

SIZE	DWG. NO.
B	
SCALE	SHEET 3 OF 3
	CODE IDENT: 58655