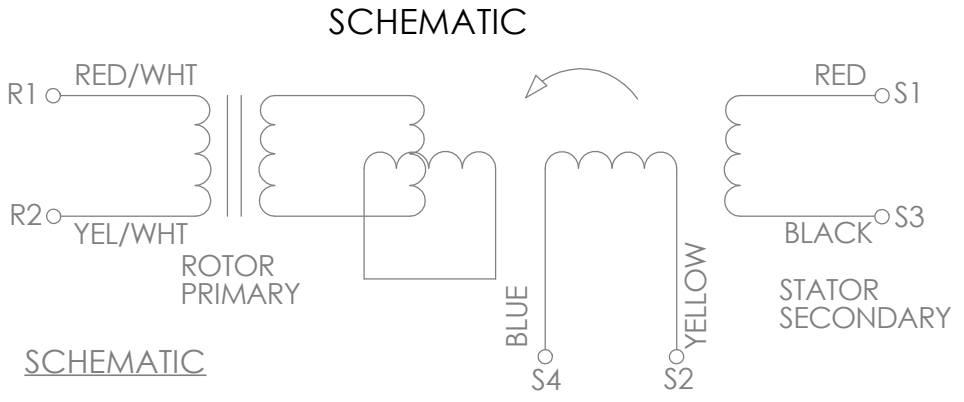


- NOTES:
1. ROTOR & STATOR ARE A MATCHED PAIR. DO NOT INTERCHANGE ROTOR OR STATOR BETWEEN RESOLVERS.
 2. ROTOR AND STATOR TO BE AXIALLY ALIGNED TO DATUM "B" ± .015.
 3. CUSTOMER MUST MAINTAIN SHAFT RUNOUT WITH RESPECT TO DATUM 'A' WITHIN .003 T.I.R.

PILOT 600 SHOWN
SEE SHEET TWO AND THREE
FOR OTHER OPTIONS

SEE SHEET 2 FOR
BORE OPTIONS



PHASING EQUATION
FOR CCW ROTATION OF ROTOR FACING
TRANSFORMER MOUNTING FLANGE END.

$$E(S1-S3) = KE(R1-R2) \cos \theta$$

$$E(S2-S4) = -KE(R1-R2) \sin \theta$$

**PART, ASSEMBLY AND ALL COMPONENTS
MEET EU ROHS DIRECTIVE**

<p>THIRD ANGLE PROJECTION</p>	<p>UNLESS OTHERWISE SPECIFIED: DIMENSIONS ARE IN INCHES [mm] DIAMETERS CONCENTRIC .003 [.076] TIR FACES PERPENDICULAR -.003 [.076] INSIDE CORNERS R .015 [.381] MAX INTERPRETATION PER ASME Y14.5M-1994</p>	<p>UNLESS OTHERWISE SPECIFIED: REMOVE ALL BURRS AND BREAK SHARP EDGES -.005/.010 [.127/.254]</p> <p>TOLERANCES: DECIMAL .00±.01 [.254] .000 ±.005 [.127] ANGLE 80.5° CHAMFER ANGLE ±10°</p>	<p>API Delevan</p>	
	<p>MATERIAL -</p> <p>FINISH -</p>	<p>MACHINE SURFACES 63</p> <p>APPROVALS - DATE -</p> <p>DRAWN -</p> <p>CHECKED -</p> <p>DES ENG -</p>	<p>21BRCX</p>	
<p>THE INFORMATION CONTAINED IN THIS DRAWING IS THE SOLE PROPERTY OF API DELEVAN. ANY REPRODUCTION IN PART OR WHOLE WITHOUT THE WRITTEN PERMISSION OF HAROWE IS PROHIBITED.</p>			<p>SIZE B</p>	<p>DWG. NO.</p>
<p>SCALE</p>			<p>SHEET 1 OF 3</p>	<p>CODE IDENT: 99800</p>

REVISIONS				
REV	ECO	DESCRIPTION	DATE	CHECKED
-	-	NEW DRAWING		

NUMBERING

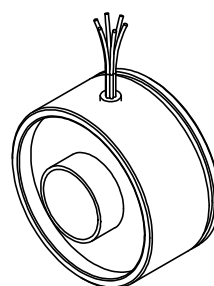
21BRCX-XXX-XXXXX-XXXX

SIZE
21

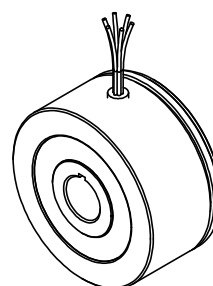
STYLE OF RESOLVER:
FRAMELESS

PILOT NUMBER	STYLE	WINDING NUMBER	Vrms	KHz	ma rms	Tr	SPEED	ACCURACY ±arcmin	BORE LETTER	BORE	"B" DIAMETER	CABLE DESIGNATION	CABLE	LEAD	LENGTH
														01	12[305]
600	SINGLE GROOVE, Ø1.35[34.3], RADIAL LEADS	002	7	10	31	.50	1	20	DP	.748	.748/.749 [19.0/19.02], 1.06 AOL	02	28 AWG FLYING LEADS	01	12[305]
														02	16[406]
601	SINGLE GROOVE, Ø1.06[26.92] RADIAL LEADS	049	8	8	52	.50	1	20	M	.800	.8000/.8007 [20.32/20.34] 1.35-1.50 AOL	05	26 AWG FLYING LEADS	03	24[609]
														04	60[1524]
														05	80[2032]
607	DOUBLE GROOVES, Ø1.06[26.92] RADIAL LEADS	098	7	4	58	1	2	10	AJ	500	.5005/.5012 [12.71/12.73] 1.35-1.5 AOL	06	28 AWG 3 TWISTED PAIRS W/DRAIN	04	60[1524]
														05	80[2032]
														06	120[3048]
616	SINGLE GROOVE, FLANGED, Ø1.22[30.10] RADIAL LEADS	008	4	5	25	.50	1	10	AQ	678	.6670/.6677 [16.94/16.96] 1.35-1.77 AOL	07	24 AWG FLYING LEADS W/SHIELDING	05	80[2032]
														06	120[3048]
														07	120[3048]
621	SINGLE GROOVE, Ø1.26[30.00] RADIAL LEADS	193	7	5	77	.50	1	7	AS	.500	.5005/.5012 [12.71/12.73] 1.06 AOL W/KEYWAY	08	28AWG FLYING LEADS HIGH TEMP	06	120[3048]
														07	120[3048]
														08	120[3048]
621	SINGLE GROOVE, Ø1.26[30.00] RADIAL LEADS	194	7	10	25	.47	1	10	AT	.500	.5005/.5012 [12.71/12.73] 1.06 AOL	09	24 AWG 3 TWISTED PAIRS	07	120[3048]
														08	120[3048]
														09	120[3048]
621	SINGLE GROOVE, Ø1.26[30.00] RADIAL LEADS	199	7	10	30	.05	1	10	AU	.560	.562/.563 [14.27/14.30] 1.03 AOL	11	22 AWG 4 TWISTED PAIRS W/SHIELDING	08	120[3048]
														09	120[3048]
														10	120[3048]
621	SINGLE GROOVE, Ø1.26[30.00] RADIAL LEADS	200	2.21	10	12	.05	1	10	BV	.500	.5000/.5010 [12.70/12.72] 1.2 AOL	12	24 AWG FLYING LEADS	09	120[3048]
														10	120[3048]
														11	120[3048]
621	SINGLE GROOVE, Ø1.26[30.00] RADIAL LEADS	009	4.25	7.5	55	.47	1	7	CH	.800	.8000/.8007 [20.32/20.34] 1.06 AOL	19	29 AWG SILIFLEX FLYING LEADS	10	120[3048]
														11	120[3048]
														12	120[3048]
621	SINGLE GROOVE, Ø1.26[30.00] RADIAL LEADS	217	6	7.5	55	.28	1	15	CM	.590	.5904/.5911 [14.99/15.01] 1.26 AOL	20	RADIATION HARDEN 26 AWG FLYING LEADS	11	120[3048]
														12	120[3048]
														13	120[3048]
621	SINGLE GROOVE, Ø1.26[30.00] RADIAL LEADS	011	4.25	7.5	55	.47	3	2	CU	.750	.7500/.7510 [19.05/19.07] 1.06 AOL	20	RADIATION HARDEN 26 AWG FLYING LEADS	12	120[3048]
														13	120[3048]
														14	120[3048]
621	SINGLE GROOVE, Ø1.26[30.00] RADIAL LEADS	269	7	10	13.5	.5	32	5	CW	.650	.6505/.6515 [16.52/16.55] 1.06 AOL	20	RADIATION HARDEN 26 AWG FLYING LEADS	13	120[3048]
														14	120[3048]
														15	120[3048]
621	SINGLE GROOVE, Ø1.26[30.00] RADIAL LEADS	012	8	2.6	10	1	1	10	CW	.650	.6505/.6515 [16.52/16.55] 1.06 AOL	20	RADIATION HARDEN 26 AWG FLYING LEADS	14	120[3048]
														15	120[3048]
														16	120[3048]
621	SINGLE GROOVE, Ø1.26[30.00] RADIAL LEADS	433	7.5	4	23	1	4	10	CW	.650	.6505/.6515 [16.52/16.55] 1.06 AOL	20	RADIATION HARDEN 26 AWG FLYING LEADS	15	120[3048]
														16	120[3048]
														17	120[3048]

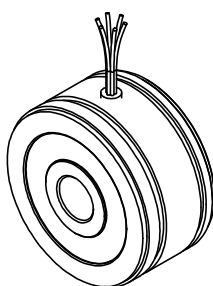
SEE SHEET 3 FOR DIMENSIONAL DIFFERENCES



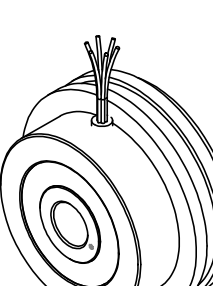
PILOT 600



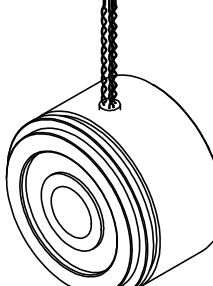
PILOT 601



PILOT 607



PILOT 616



PILOT 621

THIRD ANGLE PROJECTION

THE INFORMATION CONTAINED IN THIS DRAWING IS THE SOLE PROPERTY OF API DELEVAN. ANY REPRODUCTION IN PART OR WHOLE WITHOUT THE WRITTEN PERMISSION OF HAROWE IS PROHIBITED.

UNLESS OTHERWISE SPECIFIED: DIMENSIONS ARE IN INCHES [mm] DIAMETERS CONCENTRIC .003 [.076] TIR FACES PERPENDICULAR .003 [.076] INSIDE CORNERS R .015 [.381] MAX		UNLESS OTHERWISE SPECIFIED: REMOVE ALL BURRS AND BREAK SHARP EDGES -.005/.010	
INTERPRETATION PER ASME Y14.5M-1994		TOLERANCES: DECIMAL .00±.01 [.254] .000 ±.005 [.127] ANGLE ±0.5° CHAMFER ANGLE ±10°	
MATERIAL	-	MACHINE SURFACES	63
FINISH	-	APPROVALS	DATE
		CHECKED	-
		DES ENG	-

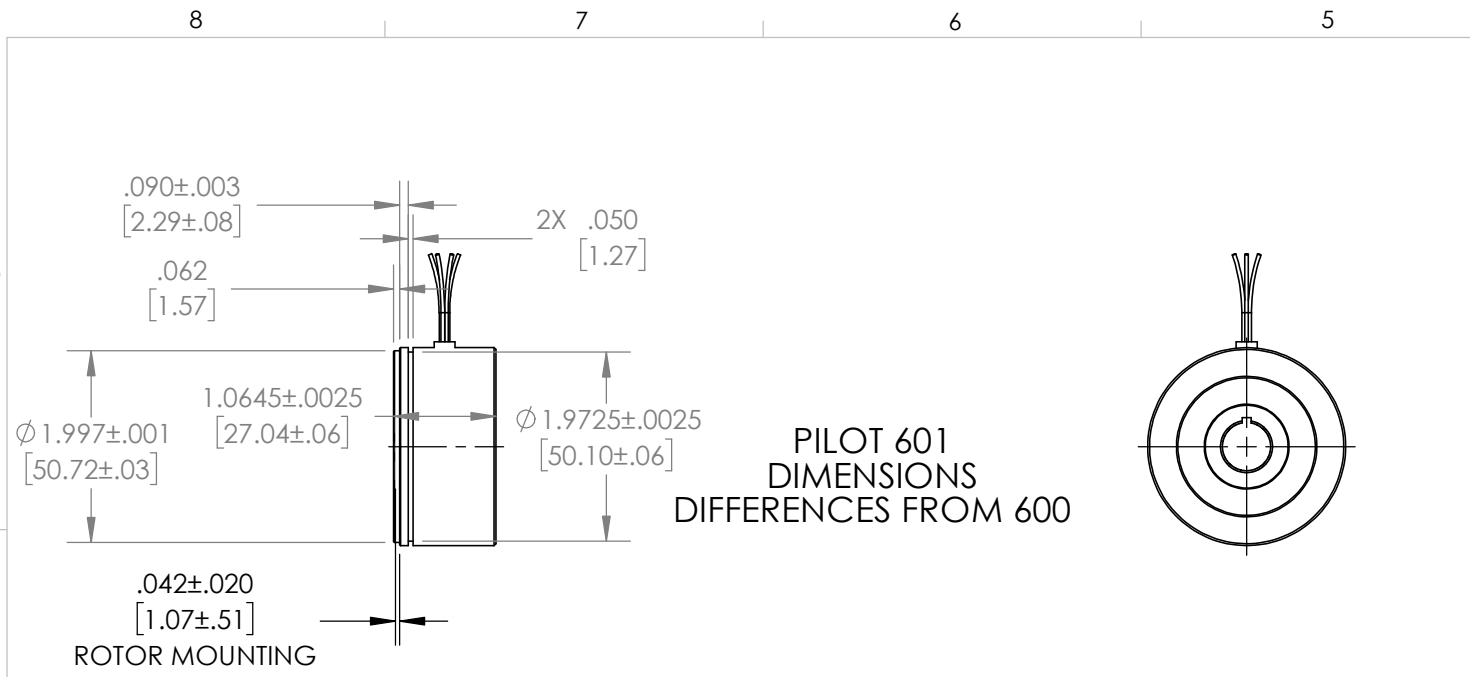
API Delevan

21BRCX

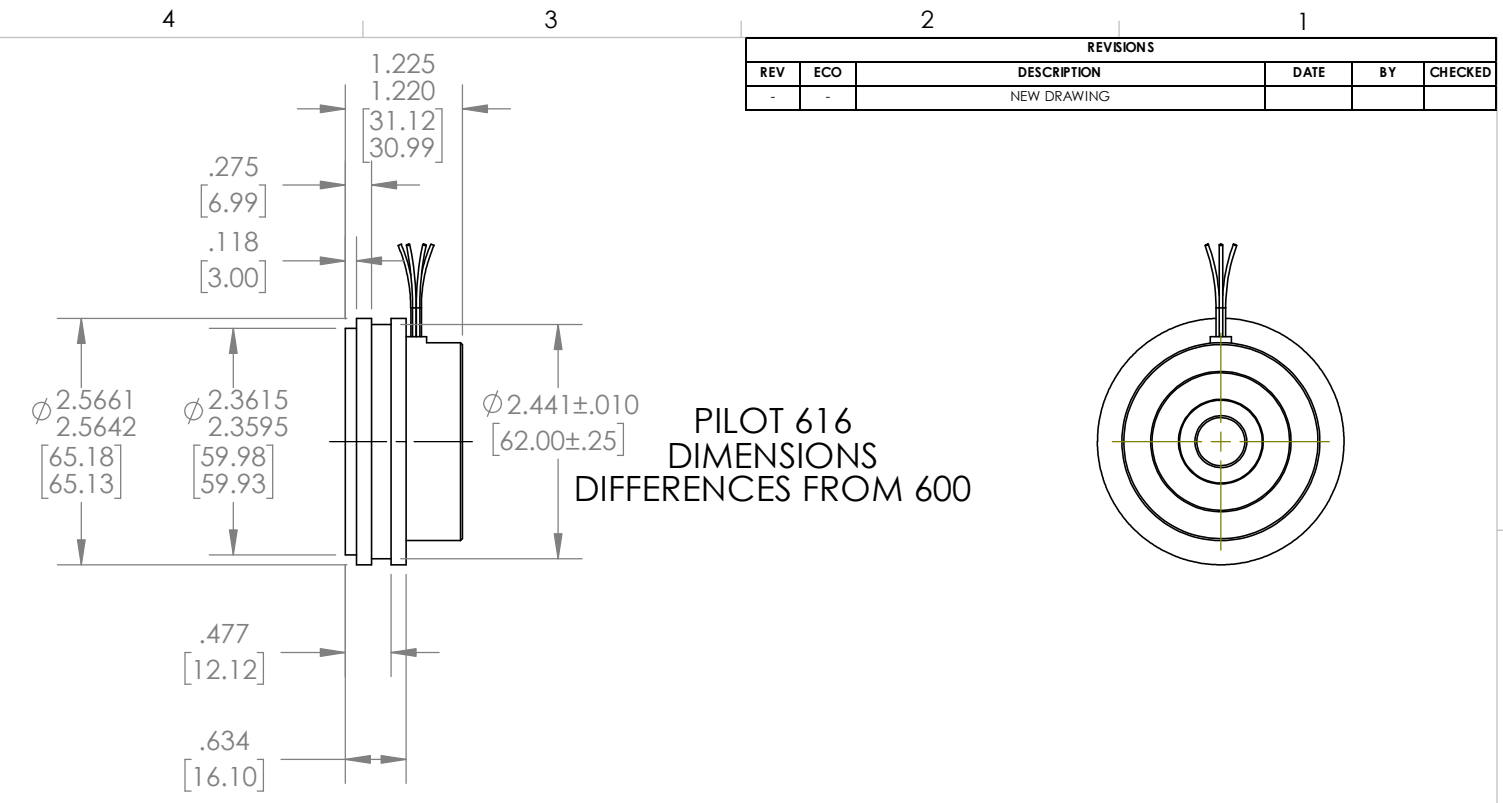
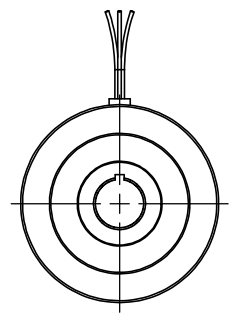
SIZE B DWG. NO. _____

SCALE _____ SHEET 2 OF 3 CODE IDENT: 58655

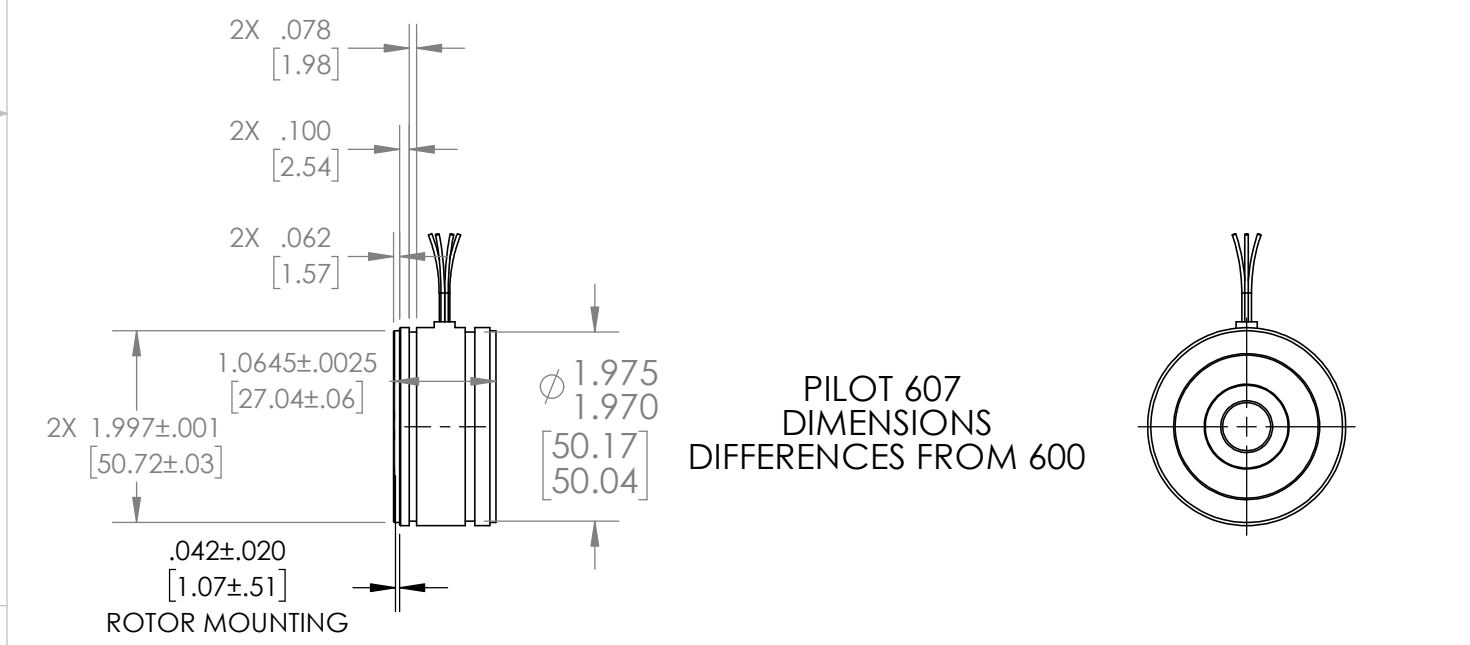
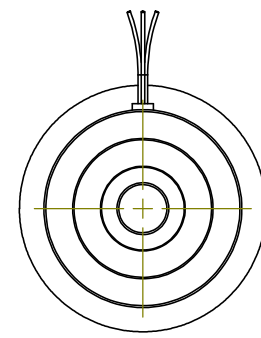
REVISIONS					
REV	ECO	DESCRIPTION	DATE	BY	CHECKED
-	-	NEW DRAWING			



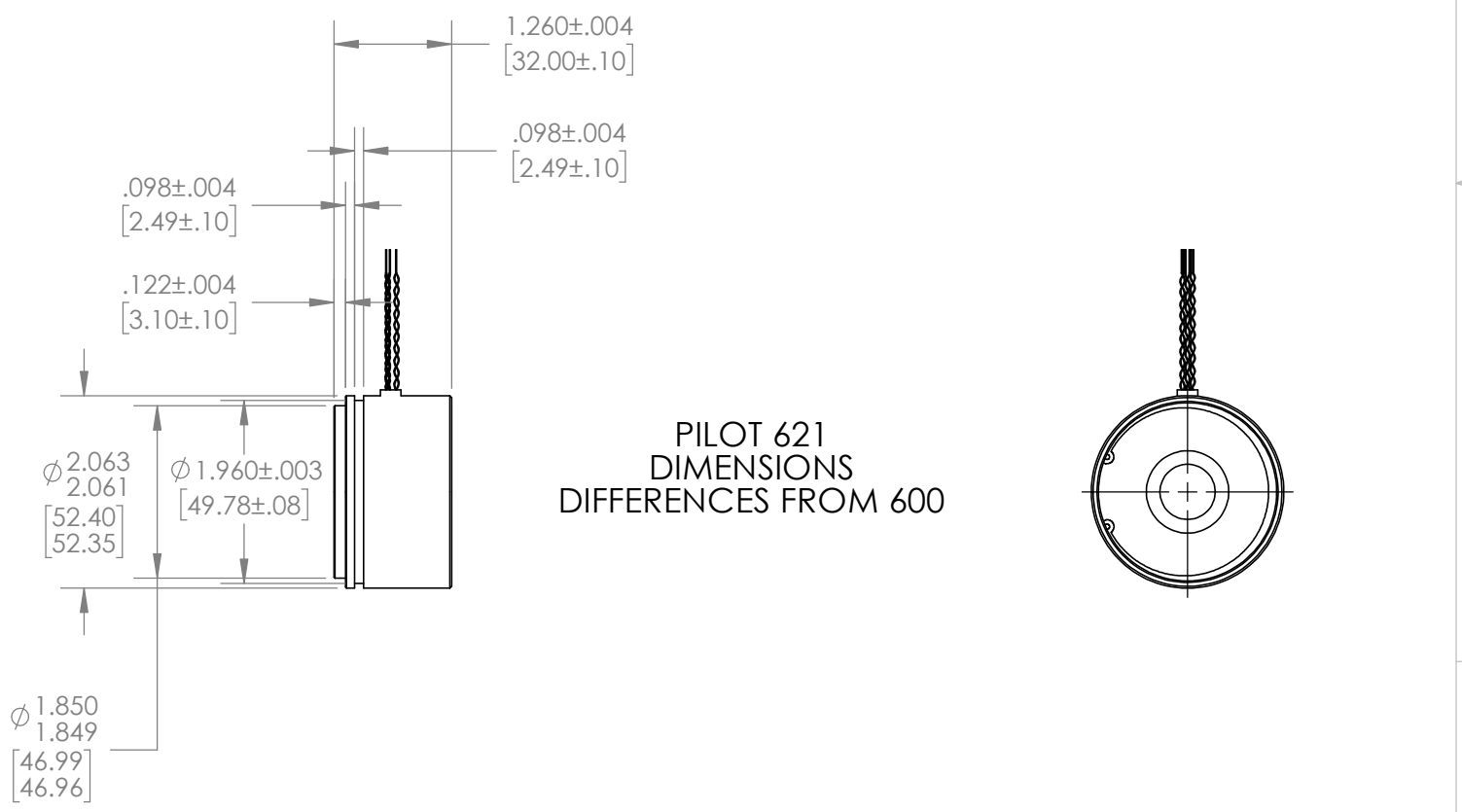
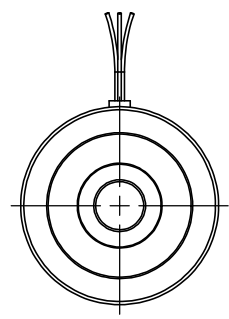
PILOT 601
DIMENSIONS
DIFFERENCES FROM 600



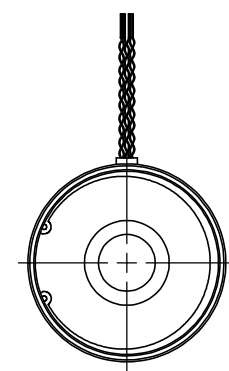
PILOT 616
DIMENSIONS
DIFFERENCES FROM 600



PILOT 607
DIMENSIONS
DIFFERENCES FROM 600



PILOT 621
DIMENSIONS
DIFFERENCES FROM 600



<p>THIRD ANGLE PROJECTION</p>	<p>UNLESS OTHERWISE SPECIFIED: DIMENSIONS ARE IN INCHES [mm] DIAMETERS CONCENTRIC .003 [.076] TIR FACES PERPENDICULAR .003 [.076] INSIDE CORNERS R .015 [.381] MAX INTERPRETATION PER ASME Y14.5M-1994</p>	<p>UNLESS OTHERWISE SPECIFIED: REMOVE ALL BURRS AND BREAK SHARP EDGES -.005/.010</p>	<h1>API Delevan</h1>	
	<p>MATERIAL</p> <p>FINISH</p>	<p>TOLERANCES: DECIMAL .00±.01 [.254] .000 ±.005 [1.27] ANGLE ±0.5° CHAMFER ANGLE ±10°</p> <p>MACHINE SURFACES 63</p>	<h1>21BRCX</h1>	
<p>THE INFORMATION CONTAINED IN THIS DRAWING IS THE SOLE PROPERTY OF API DELEVAN. ANY REPRODUCTION IN PART OR WHOLE WITHOUT THE WRITTEN PERMISSION OF HAROWE IS PROHIBITED.</p>	<p>APPROVALS</p> <p>DRAWN</p> <p>CHECKED</p> <p>DES ENG</p>	<p>DATE</p> <p>-</p> <p>-</p> <p>-</p>	<p>SIZE</p> <p>B</p>	<p>DWG. NO.</p> <p>SCALE</p> <p>SHEET 3 OF 3</p> <p>CODE IDENT: 58655</p>