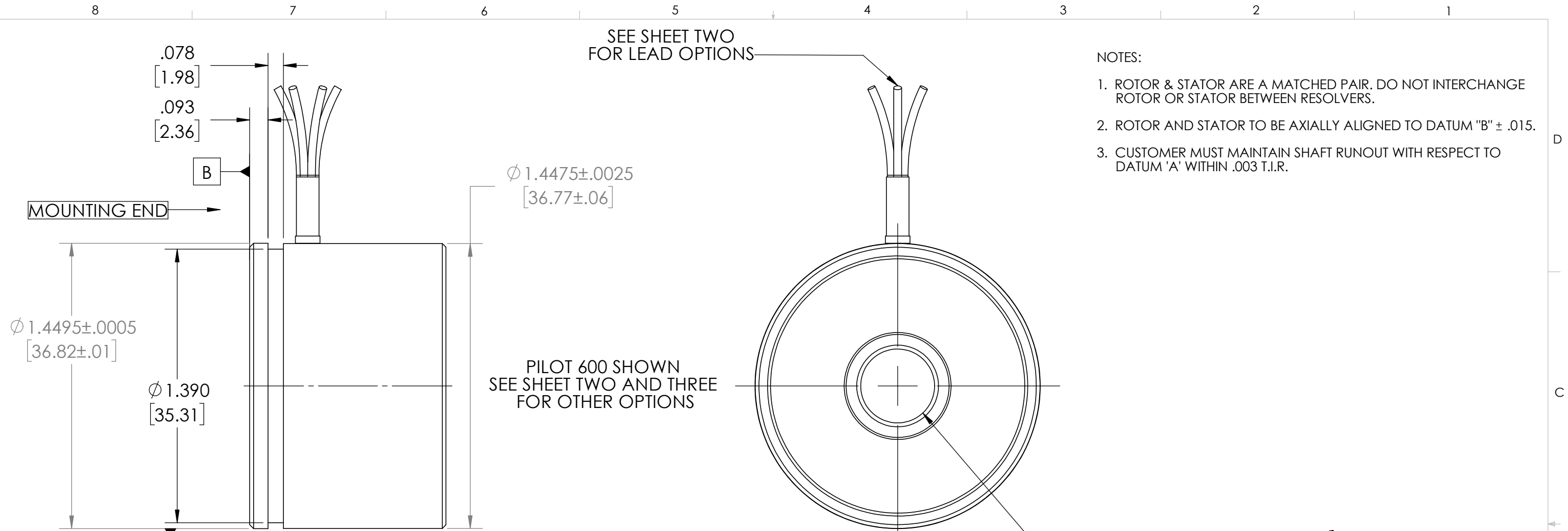


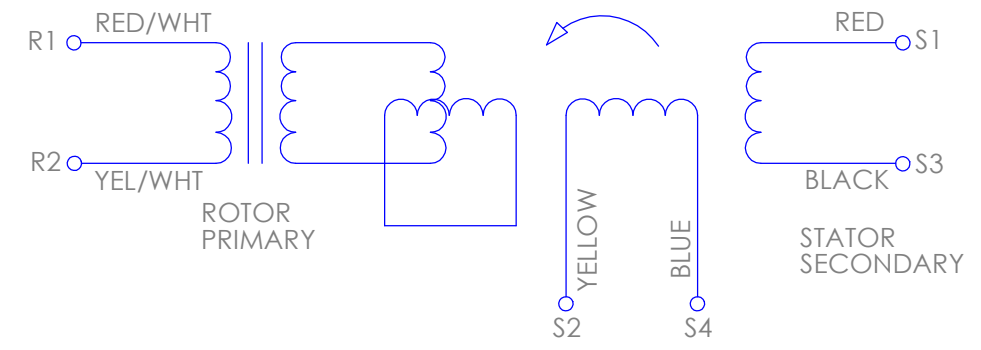
SEE SHEET TWO
FOR LEAD OPTIONS

NOTES:

1. ROTOR & STATOR ARE A MATCHED PAIR. DO NOT INTERCHANGE ROTOR OR STATOR BETWEEN RESOLVERS.
2. ROTOR AND STATOR TO BE AXIALLY ALIGNED TO DATUM "B" ± .015.
3. CUSTOMER MUST MAINTAIN SHAFT RUNOUT WITH RESPECT TO DATUM 'A' WITHIN .003 T.I.R.



SCHEMATIC



PHASING EQUATION
FOR CCW ROTATION OF ROTOR FACING
TRANSFORMER MOUNTING FLANGE END.

$$E(S1-S3) = KE(R1-R2) \cos \phi$$

$$E(S2-S4) = -KE(R1-R2) \sin \phi$$

**PART, ASSEMBLY AND ALL COMPONENTS
MEET EU ROHS DIRECTIVE**

<p>THIRD ANGLE PROJECTION</p>	<p>UNLESS OTHERWISE SPECIFIED: DIMENSIONS ARE IN INCHES [mm] DIAMETERS CONCENTRIC .003 [.076] TIR FACES PERPENDICULAR - .003 [.076] INSIDE CORNERS R .015 [.381] MAX INTERPRETATION PER ASME Y14.5M-1994</p>	<p>UNLESS OTHERWISE SPECIFIED: REMOVE ALL BURRS AND BREAK SHARP EDGES - .005/.010/.127/.254]</p> <p>TOLERANCES: DECIMAL .00±.01 [.254] .000 ±.005 [.127] ANGLE 30.5° CHAMFER ANGLE ±10°</p>	<p>API Delevan</p>	
	<p>MATERIAL -</p>	<p>MACHINE SURFACES $\sqrt{63}$</p>	<p>15BRCX</p>	
<p>THE INFORMATION CONTAINED IN THIS DRAWING IS THE SOLE PROPERTY OF API DELEVAN. ANY REPRODUCTION IN PART OR WHOLE WITHOUT THE WRITTEN PERMISSION OF HAROWE IS PROHIBITED.</p>	<p>APPROVALS -</p> <p>DATE -</p>	<p>CHECKED -</p> <p>DES ENG -</p>	<p>SIZE DWG. NO. B</p>	<p>SCALE SHEET 1 OF 3 CODE IDENT: 99800</p>

REVISIONS				
REV	ECO	DESCRIPTION	DATE	CHECKED
-	-	NEW DRAWING		

NUMBERING

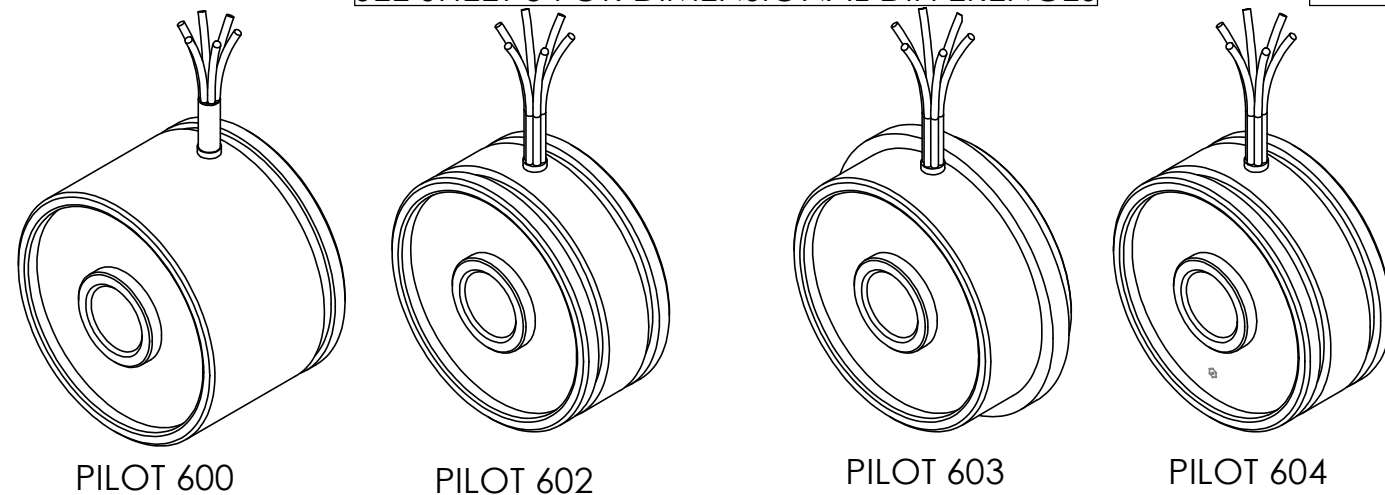
15BRCX-XXX-XXXXX-XXXX

SIZE
15

STYLE OF RESOLVER:
FRAMELESS

PILOT NUMBER	STYLE	WINDING NUMBER	Vrms	KHz	ma Arms	Tr	SPEED	ACCURACY ±arcmin	BORE LETTER	BORE	"B" DIAMETER	CABLE DESIGNATION	CABLE	LEAD	LENGTH
600	SINGLE GROOVE, Ø1.04[26.416], RADIAL LEADS	001	10	4.5	58	.50	1	10	D	3/8	.375/.376 [9.53/9.55], 1.0 AOL	02	28 AWG FLYING LEADS	01	12[305]
		035	7	8	50	.50	1	10	K	3/8	.375/.376 [9.53/9.55], .635 AOL	05	26 AWG FLYING LEADS	02	16[406]
602	SINGLE GROOVE, Ø1.04[26.416] AXIAL LEADS	002	7	10	40	.474	1	20	Q	1/4	.2500/.2510 [6.35/6.375] .625-1.0 AOL	06	28 AWG 3 TWISTED PAIRS W/DRAIN	03	24[609]
		004	4	10	16	.5	2	20	S	7/16		07	24 AWG FLYING LEADS W/SHIELDING	04	60[1524]
		006	4	5	23	1	1	15	W	8mm		08	28AWG FLYING LEADS HIGH TEMP	05	80[2032]
603	MOUNTING EARS, Ø.988[25.010] RADIAL LEADS	007	2	6	45	.47	1	7	AC	10 mm		09	24 AWG 3 TWISTED PAIRS	06	120[3048]
		009	4.25	7	55	.5	1	7	AM	3/8		11	22 AWG 4 TWISTED PAIRS W/SHIELDING		
604	NO GROOVE, Ø.984[25.00] RADIAL LEADS	010	7	10	32	.47	1	16	AU	SPCL		12	24 AWG FLYING LEADS		
		011	4.25	10	35	1	3	8	AX	12 mm		19	29 AWG SILIFLEX FLYING LEADS		
		014	3.5	10	65	.5	1	16	AY	1/4	.2500/.2510 [6.35/6.375] .635 AOL	20	RADIATION HARDEN 26 AWG FLYING LEADS		
		018	7	8	45		4								

SEE SHEET 3 FOR DIMENSIONAL DIFFERENCES



THIRD ANGLE PROJECTION

UNLESS OTHERWISE SPECIFIED:
DIMENSIONS ARE IN INCHES [mm]
DIAMETERS CONCENTRIC .003 [.076] TIR
FACES PERPENDICULAR .003 [.076]
INSIDE CORNERS R .015 [.381] MAX

INTERPRETATION PER ASME
Y14.5M-1994

UNLESS OTHERWISE SPECIFIED:
REMOVE ALL BURRS AND BREAK
SHARP EDGES -.005/.010

TOLERANCES:
DECIMAL .00±.01 [.254], .000 ±.005 [.127]
ANGLE ±0.5°
CHAMFER ANGLE ±10°

MACHINE SURFACES 63

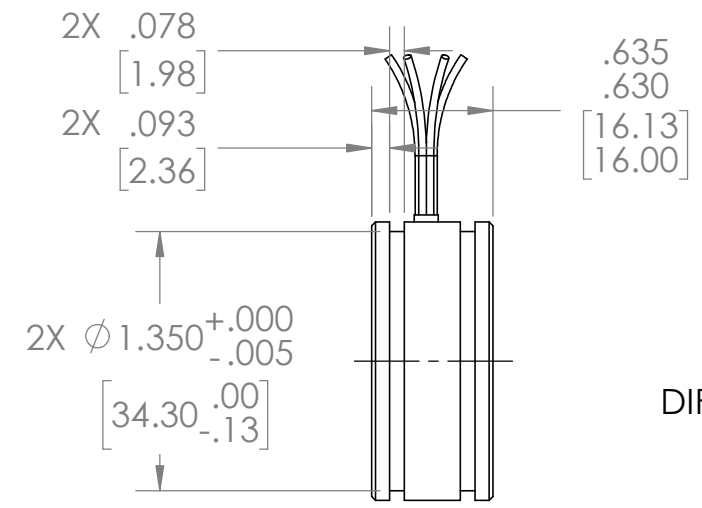
API Delevan

15BRCX

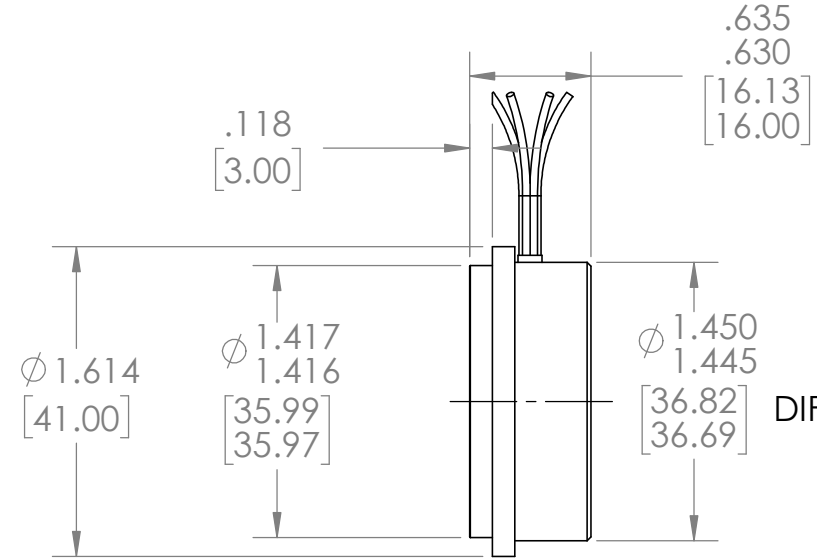
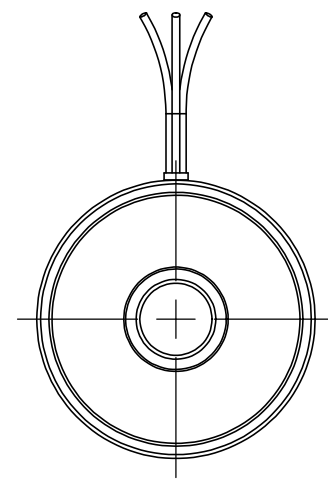
MATERIAL	-	APPROVALS	DATE
FINISH	-	CHECKED	-
		DES ENG	-

SIZE B	DWG. NO.
SCALE	SHEET 2 OF 3
	CODE IDENT: 58655

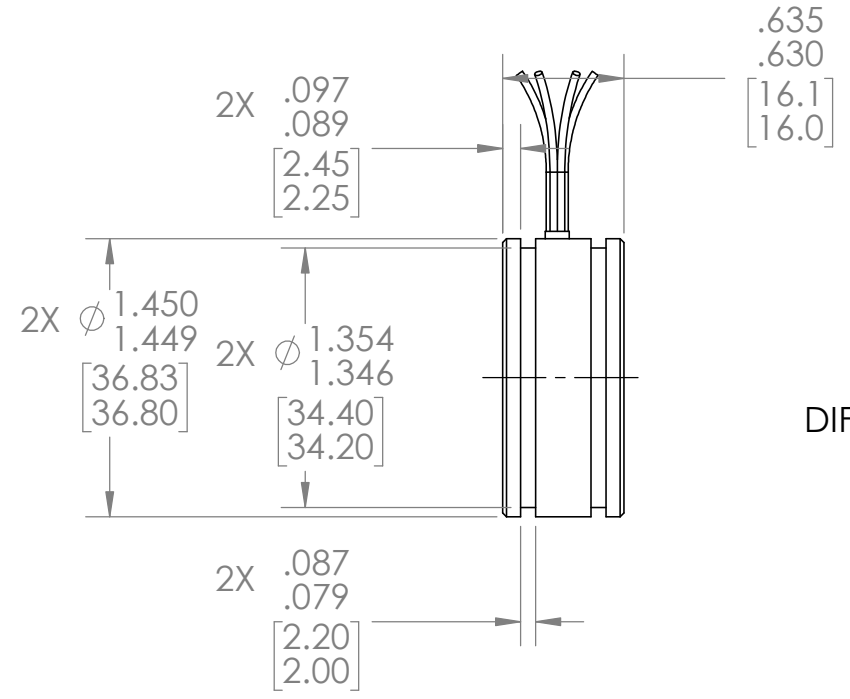
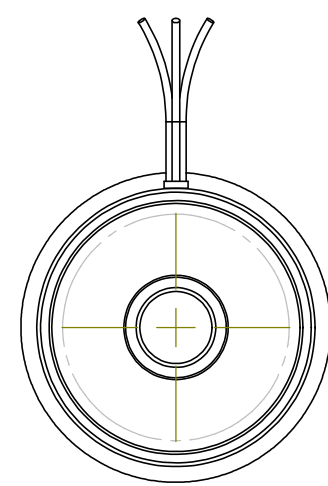
REVISIONS				
REV	ECO	DESCRIPTION	DATE	CHECKED
-	-	NEW DRAWING		



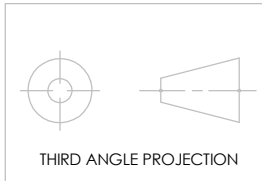
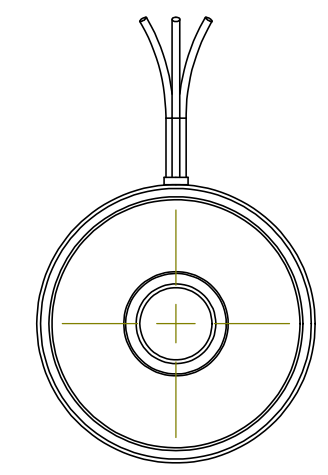
PILOT 602
DIMENSIONS
DIFFERENCES FROM 600



PILOT 603
DIMENSIONS
DIFFERENCES FROM 600



PILOT 604
DIMENSIONS
DIFFERENCES FROM 600



THIRD ANGLE PROJECTION

THE INFORMATION CONTAINED IN THIS DRAWING IS THE SOLE PROPERTY OF API DELEVAN. ANY REPRODUCTION IN PART OR WHOLE WITHOUT THE WRITTEN PERMISSION OF HAROWE IS PROHIBITED.

UNLESS OTHERWISE SPECIFIED: DIMENSIONS ARE IN INCHES [mm] DIAMETERS CONCENTRIC .003 [.076] TIR FACES PERPENDICULAR - .003 [.076] INSIDE CORNERS R .015 [.381] MAX INTERPRETATION PER ASME Y14.5M-1994		UNLESS OTHERWISE SPECIFIED: REMOVE ALL BURRS AND BREAK SHARP EDGES - .005/.010	
MATERIAL		TOLERANCES: DECIMAL .00±.01 [.254] .000 ±.005 [.127] ANGLE ±0.5° CHAMFER ANGLE ±10°	
FINISH		MACHINE SURFACES 63	
APPROVALS		DATE	
DRAWN		-	
CHECKED		-	
DES ENG		-	

API Delevan

15BRCX

SIZE	DWG. NO.
B	
SCALE	SHEET 3 OF 3
	CODE IDENT: 58655